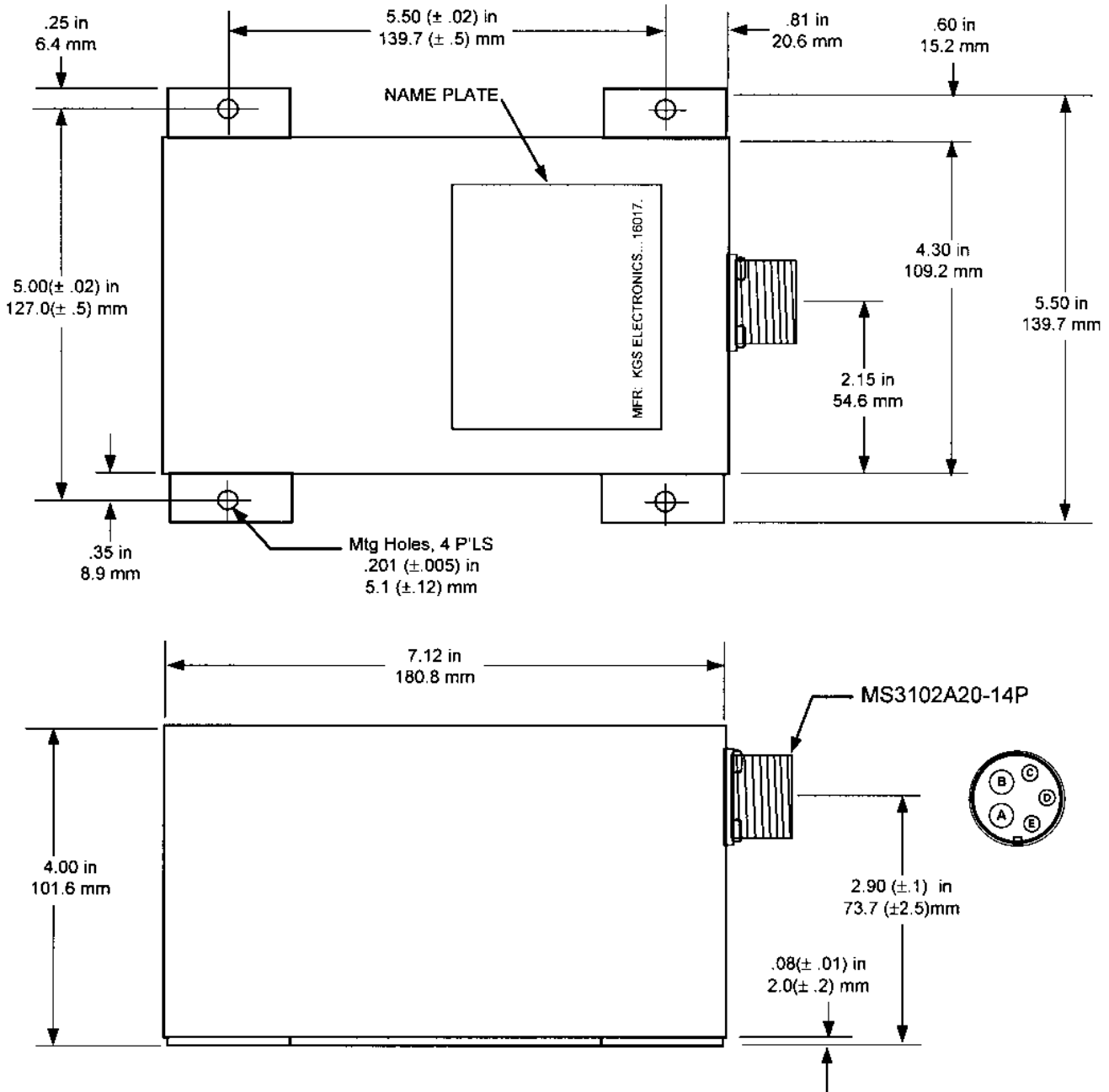


# RHB40

DC/DC Regulated Boost Converter  
Wide Input Voltage Range (8 to 30.5Vdc)

## Outline Drawing



### NOTE

1. Unless otherwise noted, the dimensional tolerance is  $\pm 0.06$  in (1.6 mm)
2. The above dimensions do not include protrusion of the connector and screw heads.